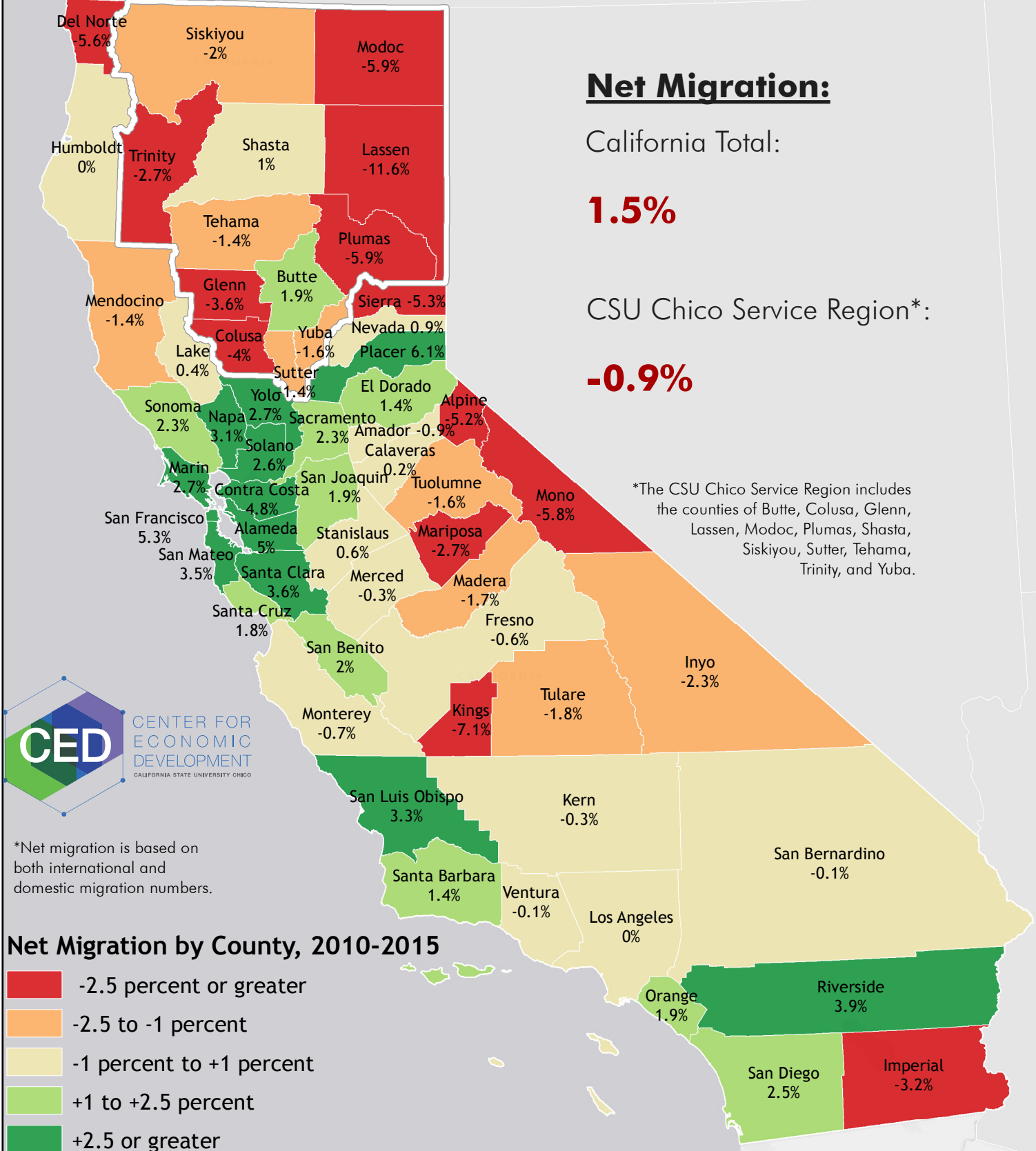


Net Migration* By County, 2010-2015



*Net migration is based on both international and domestic migration numbers.

Net Migration by County, 2010-2015

- 2.5 percent or greater
- 2.5 to -1 percent
- 1 percent to +1 percent
- +1 to +2.5 percent
- +2.5 or greater

Sources:
US Census Bureau: Components of Population Change 2010-2015

